

RESIDENTIAL FLOOR PLANS

VICEROY  
BRICKELL  
THE RESIDENCES

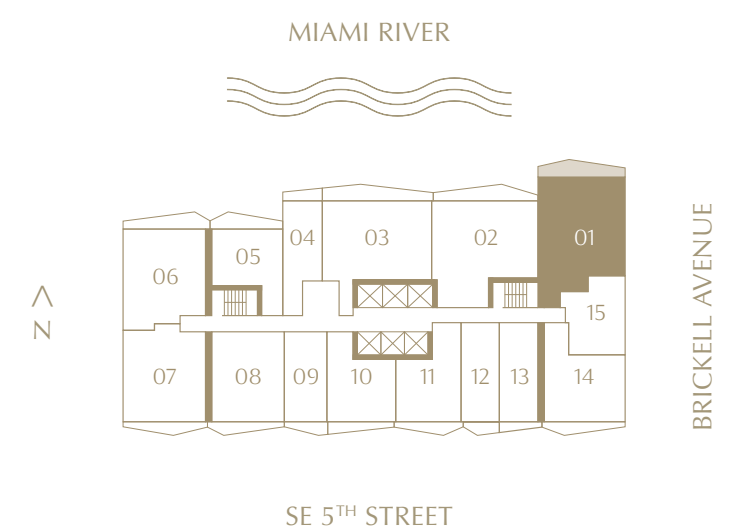
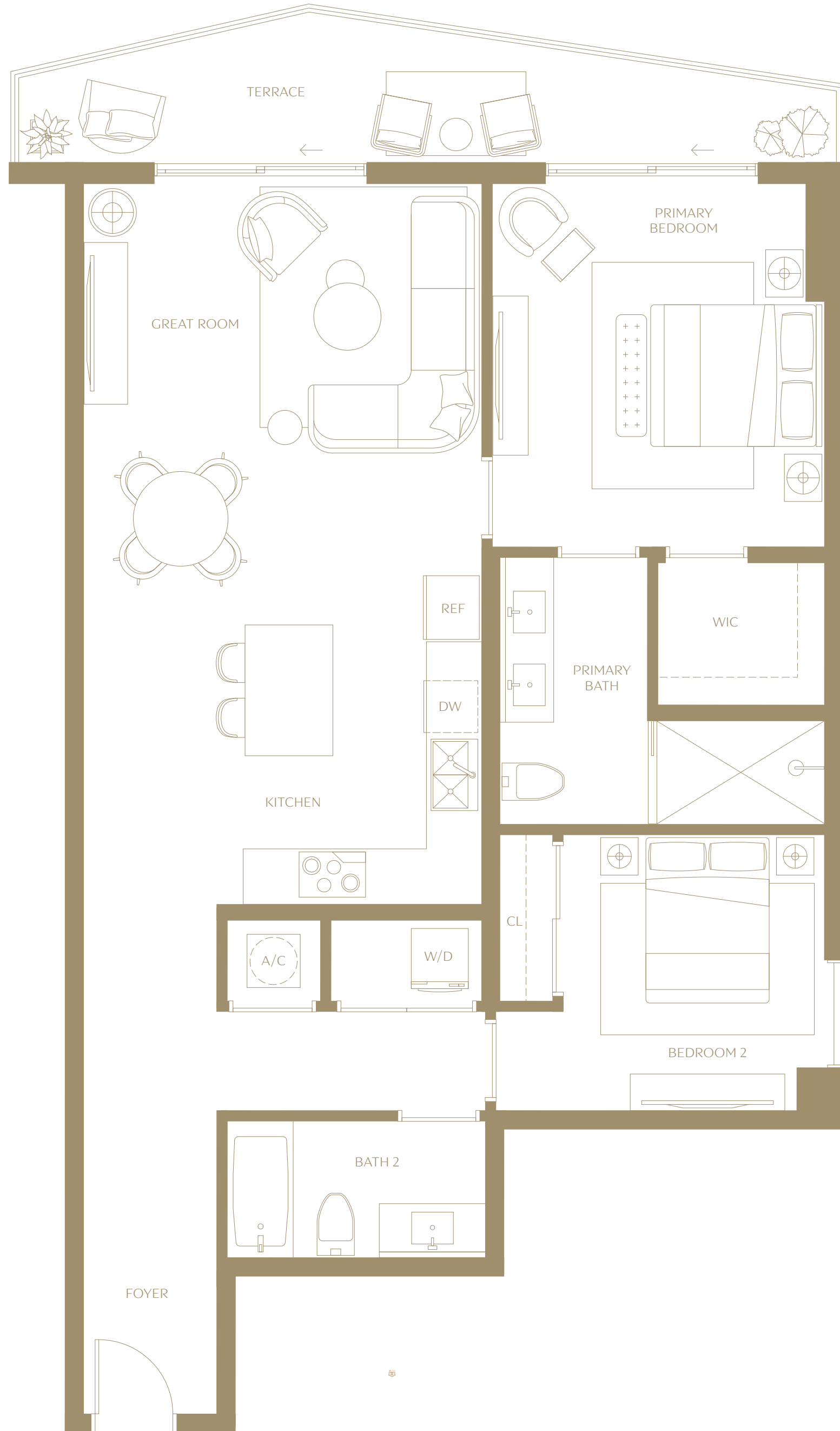
REMEMBER TO LIVE™

# Residence 01

2 BEDROOMS | 2 BATHROOMS | LEVELS 15 TO 42

<b>INTERIOR</b>	1,217 SQ. FT.	113.06 SQ. MTS.
<b>EXTERIOR</b>	141 SQ. FT.	13 SQ. MTS.

## VICEROY BRICKELL THE RESIDENCES



Sales: Fortune Development Sales & Related Realty

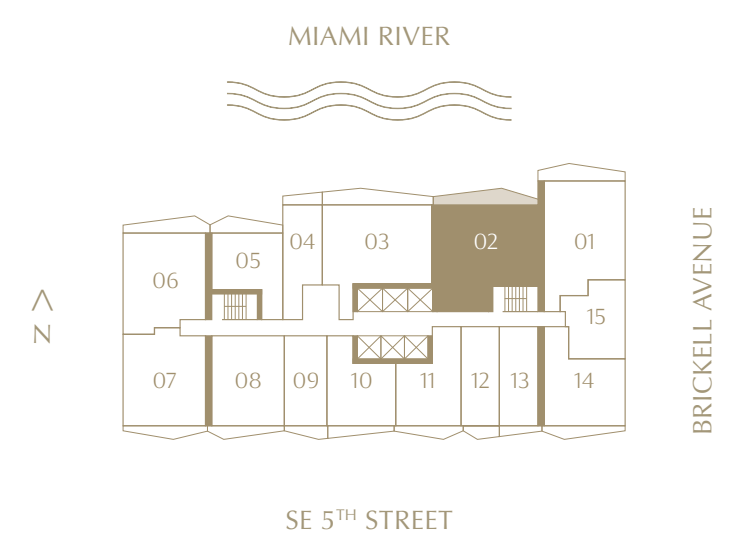
The dimensions stated for this floor plan are approximate because there are various recognized methods for calculating the square footage of a unit. The square footage stated here is calculated from the exterior boundaries of the exterior walls to the centerline of interior demising walls without deductions for cutouts, curves, or architectural features. This method typically results in quoted dimensions greater than the dimensions that would be determined by using other accepted methods. The definition of "Unit" and the calculation method to be relied upon is set forth by 444 BRICKELL TWO, LLC (the "Developer") in Developer's prospectus which method may result in a square footage calculation less than the result of the calculation method used here. VICEROY BRANDS, LLC owns the mark and name Viceroy®. The Developer is permitted to use the name and logo of The Related Group® and Viceroy® pursuant to license agreements which are valid unless terminated or expired; neither The Related Group nor Viceroy Brands, LLC are the Developer. Consult the Developer's prospectus to learn what is included with Unit purchase and to understand Unit dimensions. 2024 © 444 BRICKELL TWO, LLC with all rights reserved.

# Residence 02

2 BEDROOMS | 2 BATHROOMS | LEVELS 15 TO 42

<b>INTERIOR</b>	1,286 SQ. FT.	119.47 SQ. MTS.
<b>EXTERIOR</b>	161 SQ. FT.	15 SQ. MTS.

**VICEROY  
BRICKELL**  
THE RESIDENCES



Sales: Fortune Development Sales & Related Realty

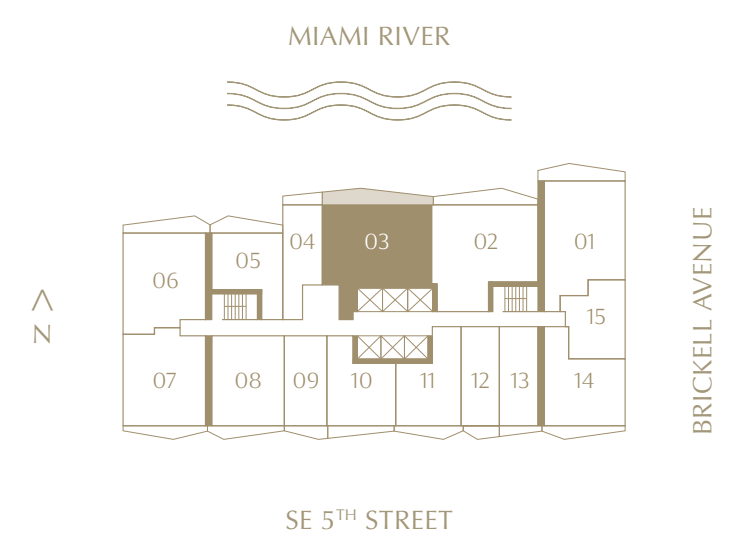
The dimensions stated for this floor plan are approximate because there are various recognized methods for calculating the square footage of a unit. The square footage stated here is calculated from the exterior boundaries of the exterior walls to the centerline of interior demising walls without deductions for cutouts, curves, or architectural features. This method typically results in quoted dimensions greater than the dimensions that would be determined by using other accepted methods. The definition of "Unit" and the calculation method to be relied upon is set forth by 444 BRICKELL TWO, LLC (the "Developer") in Developer's prospectus which method may result in a square footage calculation less than the result of the calculation method used here. VICEROY BRANDS, LLC owns the mark and name Viceroy®. The Developer is permitted to use the name and logo of The Related Group® and Viceroy® pursuant to license agreements which are valid unless terminated or expired; neither The Related Group nor Viceroy Brands, LLC are the Developer. Consult the Developer's prospectus to learn what is included with Unit purchase and to understand Unit dimensions. 2024 © 444 BRICKELL TWO, LLC with all rights reserved.

# Residence 03

2 BEDROOMS | 2 BATHROOMS | LEVELS 15 TO 42

<b>INTERIOR</b>	1,235 SQ. FT.	114.74 SQ. MTS.
<b>EXTERIOR</b>	187 SQ. FT.	17 SQ. MTS.

**VICEROY  
BRICKELL**  
THE RESIDENCES



Sales: Fortune Development Sales & Related Realty

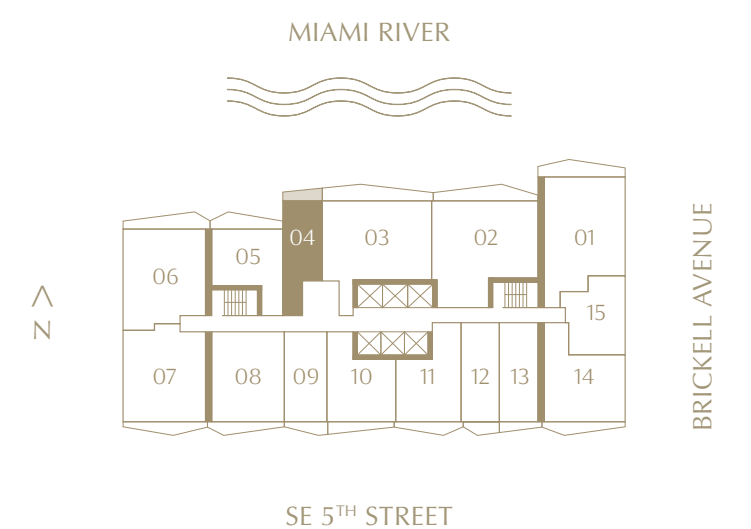
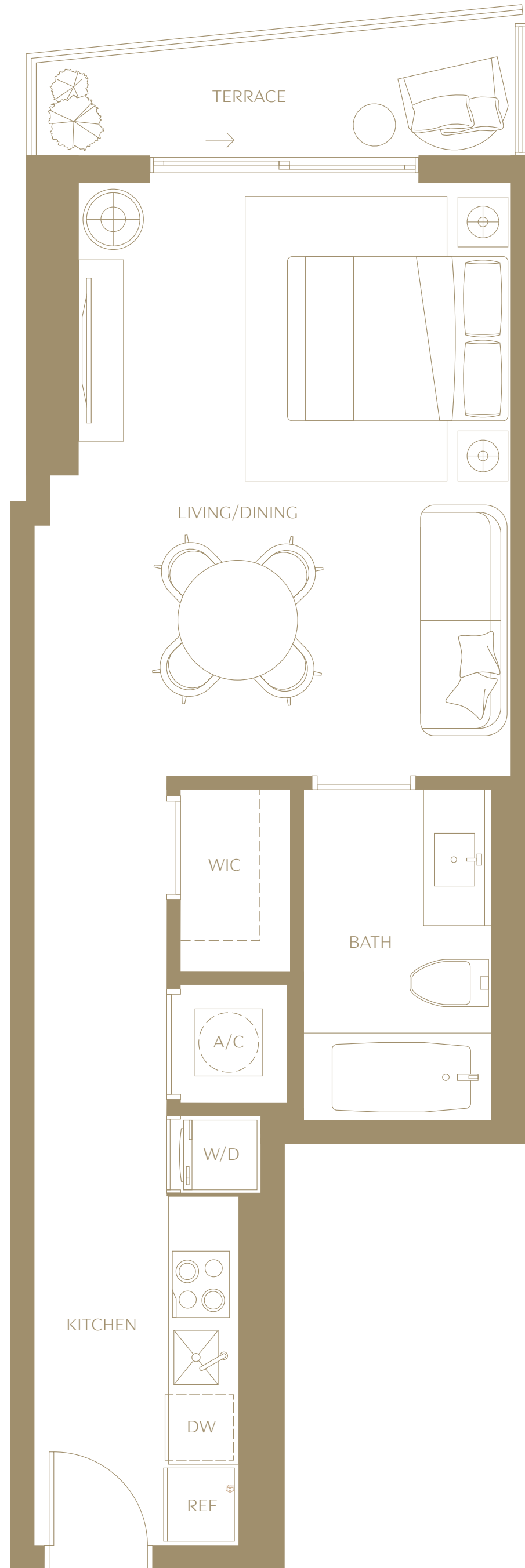
The dimensions stated for this floor plan are approximate because there are various recognized methods for calculating the square footage of a unit. The square footage stated here is calculated from the exterior boundaries of the exterior walls to the centerline of interior demising walls without deductions for cutouts, curves, or architectural features. This method typically results in quoted dimensions greater than the dimensions that would be determined by using other accepted methods. The definition of "Unit" and the calculation method to be relied upon is set forth by 444 BRICKELL TWO, LLC (the "Developer") in Developer's prospectus which method may result in a square footage calculation less than the result of the calculation method used here. VICEROY BRANDS, LLC owns the mark and name Viceroy®. The Developer is permitted to use the name and logo of The Related Group® and Viceroy® pursuant to license agreements which are valid unless terminated or expired; neither The Related Group nor Viceroy Brands, LLC are the Developer. Consult the Developer's prospectus to learn what is included with Unit purchase and to understand Unit dimensions. 2024 © 444 BRICKELL TWO, LLC with all rights reserved.

# Residence 04

STUDIO | 1 BATHROOM | LEVELS 15 TO 42

<b>INTERIOR</b>	519 SQ. FT.	48.22 SQ. MTS.
<b>EXTERIOR</b>	57 SQ. FT.	5 SQ. MTS.

## VICEROY BRICKELL THE RESIDENCES



Sales: Fortune Development Sales & Related Realty

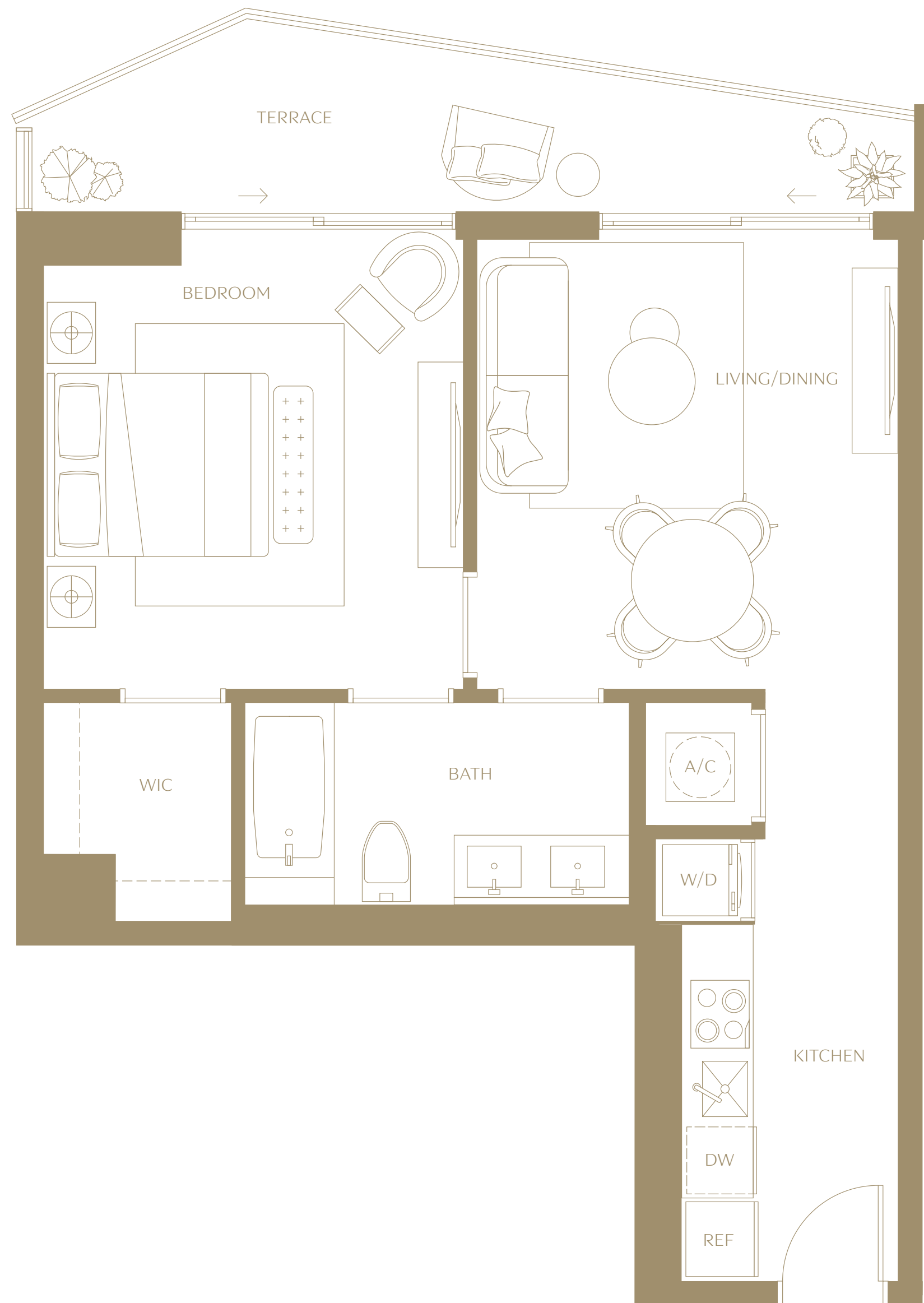
ⓘ The dimensions stated for this floor plan are approximate because there are various recognized methods for calculating the square footage of a unit. The square footage stated here is calculated from the exterior boundaries of the exterior walls to the centerline of interior demising walls without deductions for cutouts, curves, or architectural features. This method typically results in quoted dimensions greater than the dimensions that would be determined by using other accepted methods. The definition of "Unit" and the calculation method to be relied upon is set forth by 444 BRICKELL TWO, LLC (the "Developer") in Developer's prospectus which method may result in a square footage calculation less than the result of the calculation method used here. VICEROY BRANDS, LLC owns the mark and name Viceroy®. The Developer is permitted to use the name and logo of The Related Group® and Viceroy® pursuant to license agreements which are valid unless terminated or expired; neither The Related Group nor Viceroy Brands, LLC are the Developer. Consult the Developer's prospectus to learn what is included with Unit purchase and to understand Unit dimensions. 2024 © 444 BRICKELL TWO, LLC with all rights reserved.

# Residence 05

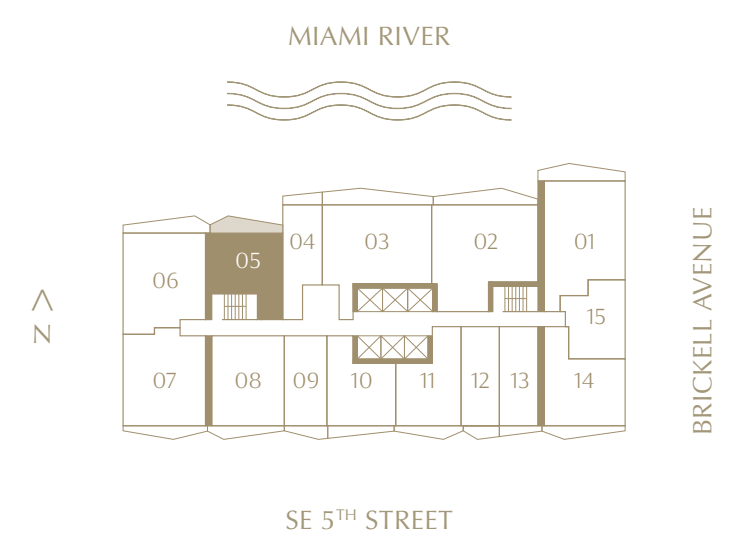
1 BEDROOM | 1 BATHROOM | LEVELS 15 TO 42

<b>INTERIOR</b>	670 SQ. FT.	62.25 SQ. MTS.
<b>EXTERIOR</b>	117 SQ. FT.	11 SQ. MTS.

## VICEROY BRICKELL THE RESIDENCES



5



Sales: Fortune Development Sales & Related Realty

The dimensions stated for this floor plan are approximate because there are various recognized methods for calculating the square footage of a unit. The square footage stated here is calculated from the exterior boundaries of the exterior walls to the centerline of interior demising walls without deductions for cutouts, curves, or architectural features. This method typically results in quoted dimensions greater than the dimensions that would be determined by using other accepted methods. The definition of "Unit" and the calculation method to be relied upon is set forth by 444 BRICKELL TWO, LLC (the "Developer") in Developer's prospectus which method may result in a square footage calculation less than the result of the calculation method used here. VICEROY BRANDS, LLC owns the mark and name Viceroy®. The Developer is permitted to use the name and logo of The Related Group® and Viceroy® pursuant to license agreements which are valid unless terminated or expired; neither The Related Group nor Viceroy Brands, LLC are the Developer. Consult the Developer's prospectus to learn what is included with Unit purchase and to understand Unit dimensions. 2024 © 444 BRICKELL TWO, LLC with all rights reserved.

# Residence 06

2 BEDROOMS | 2 BATHROOMS | LEVELS 15 TO 42

<b>INTERIOR</b>	1,041 SQ. FT.	96.71 SQ. MTS.
<b>EXTERIOR</b>	138 SQ. FT.	13 SQ. MTS.

**VICEROY  
BRICKELL**  
THE RESIDENCES



Sales: Fortune Development Sales & Related Realty

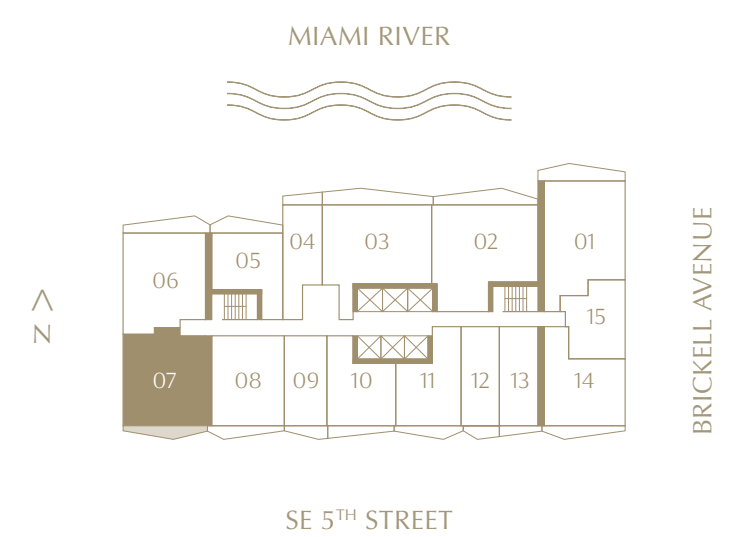
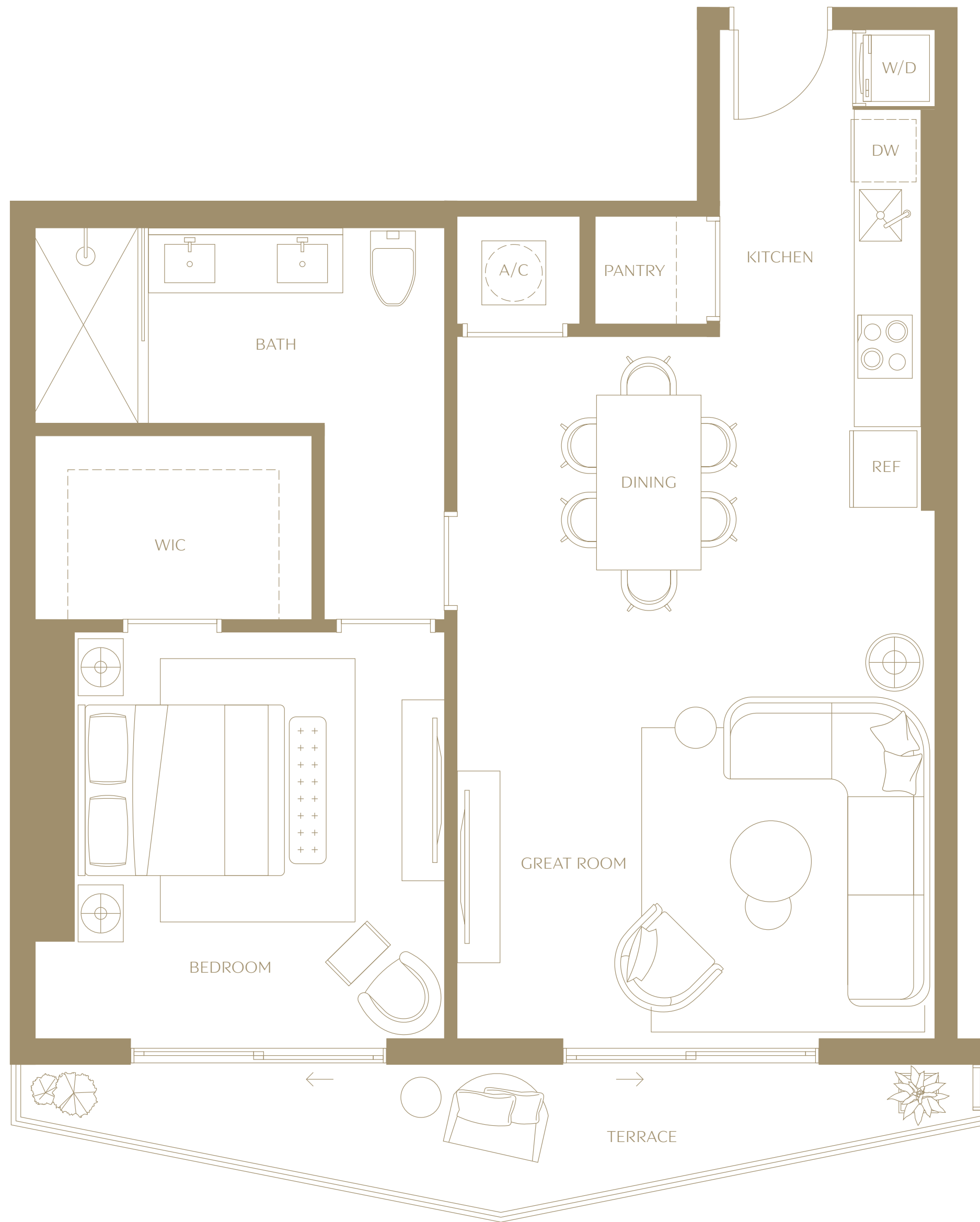
The dimensions stated for this floor plan are approximate because there are various recognized methods for calculating the square footage of a unit. The square footage stated here is calculated from the exterior boundaries of the exterior walls to the centerline of interior demising walls without deductions for cutouts, curves, or architectural features. This method typically results in quoted dimensions greater than the dimensions that would be determined by using other accepted methods. The definition of "Unit" and the calculation method to be relied upon is set forth by 444 BRICKELL TWO, LLC (the "Developer") in Developer's prospectus which method may result in a square footage calculation less than the result of the calculation method used here. VICEROY BRANDS, LLC owns the mark and name Viceroy®. The Developer is permitted to use the name and logo of The Related Group® and Viceroy® pursuant to license agreements which are valid unless terminated or expired; neither The Related Group nor Viceroy Brands, LLC are the Developer. Consult the Developer's prospectus to learn what is included with Unit purchase and to understand Unit dimensions. 2024 © 444 BRICKELL TWO, LLC with all rights reserved.

# Residence 07

2 BEDROOMS | 2 BATHROOMS | LEVELS 15 TO 42

<b>INTERIOR</b>	1,030 SQ. FT.	95.69 SQ. MTS.
<b>EXTERIOR</b>	104 SQ. FT.	10 SQ. MTS.

**VICEROY  
BRICKELL**  
THE RESIDENCES



Sales: Fortune Development Sales & Related Realty

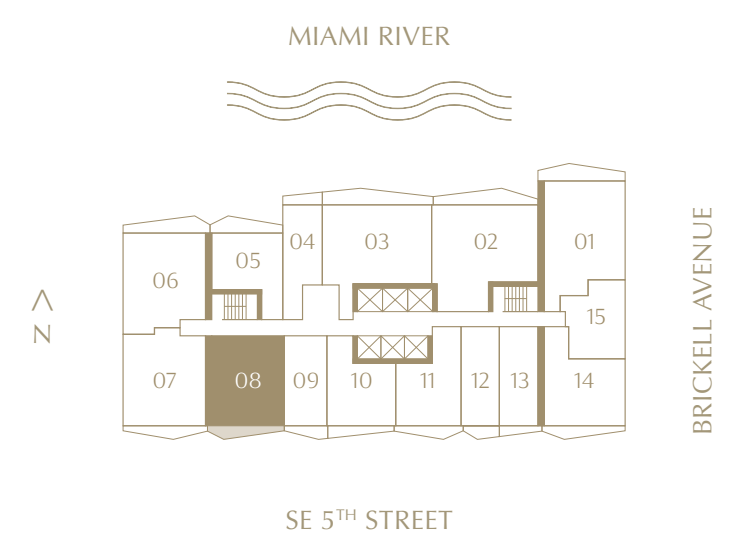
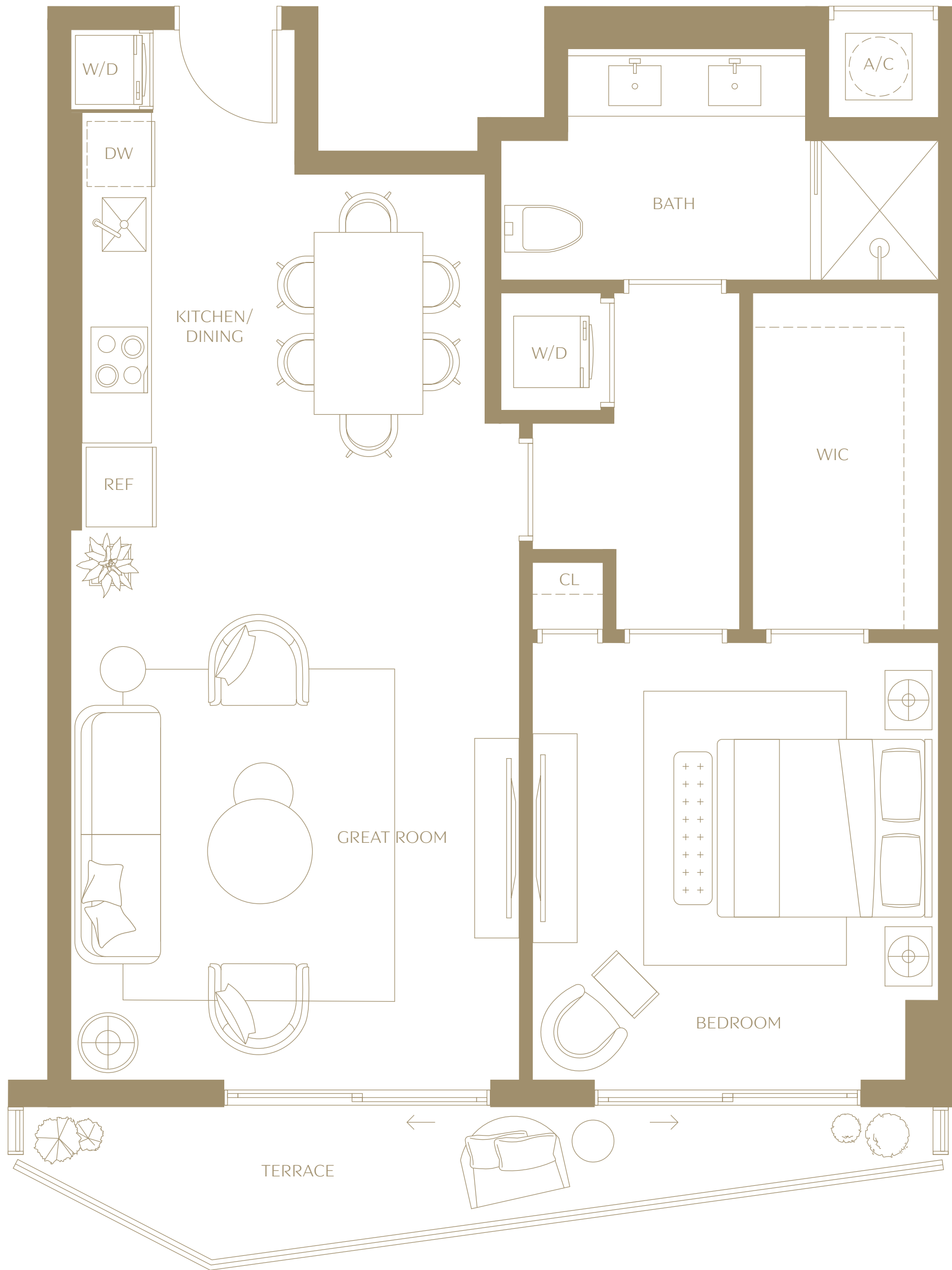
The dimensions stated for this floor plan are approximate because there are various recognized methods for calculating the square footage of a unit. The square footage stated here is calculated from the exterior boundaries of the exterior walls to the centerline of interior demising walls without deductions for cutouts, curves, or architectural features. This method typically results in quoted dimensions greater than the dimensions that would be determined by using other accepted methods. The definition of "Unit" and the calculation method to be relied upon is set forth by 444 BRICKELL TWO, LLC (the "Developer") in Developer's prospectus which method may result in a square footage calculation less than the result of the calculation method used here. VICEROY BRANDS, LLC owns the mark and name Viceroy®. The Developer is permitted to use the name and logo of The Related Group® and Viceroy® pursuant to license agreements which are valid unless terminated or expired; neither The Related Group nor Viceroy Brands, LLC are the Developer. Consult the Developer's prospectus to learn what is included with Unit purchase and to understand Unit dimensions. 2024 © 444 BRICKELL TWO, LLC with all rights reserved.

# Residence 08

1 BEDROOM | 1 BATHROOM | LEVELS 15 TO 42

<b>INTERIOR</b>	862 SQ. FT.	80.08 SQ. MTS.
<b>EXTERIOR</b>	96 SQ. FT.	9 SQ. MTS.

**VICEROY  
BRICKELL**  
THE RESIDENCES



Sales: Fortune Development Sales & Related Realty

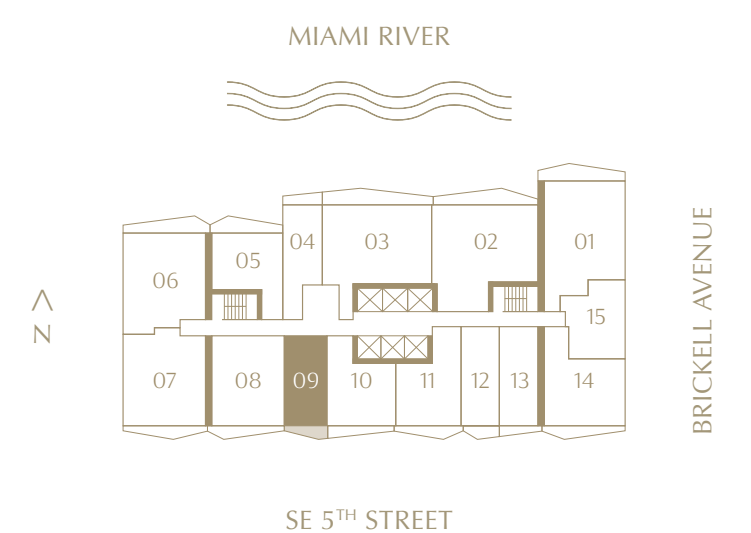
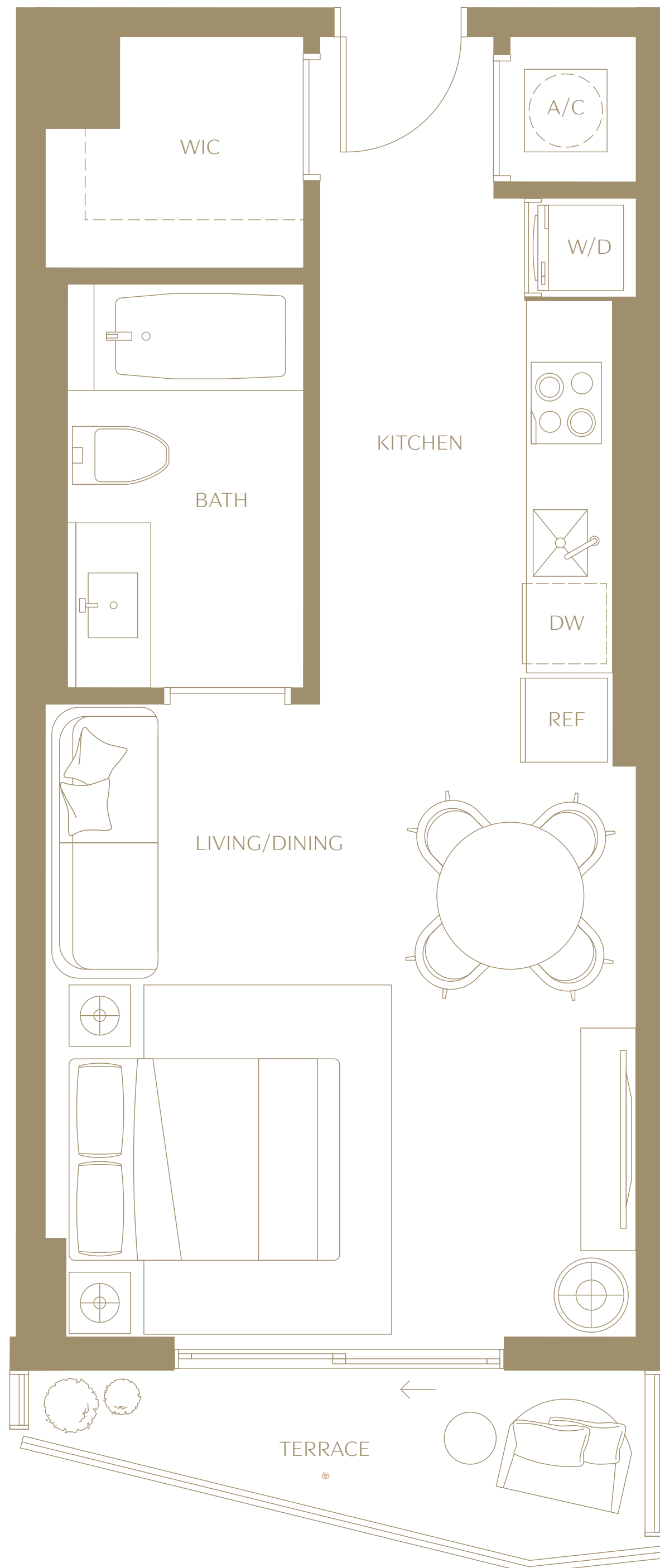
The dimensions stated for this floor plan are approximate because there are various recognized methods for calculating the square footage of a unit. The square footage stated here is calculated from the exterior boundaries of the exterior walls to the centerline of interior demising walls without deductions for cutouts, curves, or architectural features. This method typically results in quoted dimensions greater than the dimensions that would be determined by using other accepted methods. The definition of "Unit" and the calculation method to be relied upon is set forth by 444 BRICKELL TWO, LLC (the "Developer") in Developer's prospectus which method may result in a square footage calculation less than the result of the calculation method used here. VICEROY BRANDS, LLC owns the mark and name Viceroy®. The Developer is permitted to use the name and logo of The Related Group® and Viceroy® pursuant to license agreements which are valid unless terminated or expired; neither The Related Group nor Viceroy Brands, LLC are the Developer. Consult the Developer's prospectus to learn what is included with Unit purchase and to understand Unit dimensions. 2024 © 444 BRICKELL TWO, LLC with all rights reserved.

# Residence 09

STUDIO | 1 BATHROOM | LEVELS 15 TO 42

<b>INTERIOR</b>	485 SQ. FT.	45.06 SQ. MTS.
<b>EXTERIOR</b>	57 SQ. FT.	5 SQ. MTS.

VICEROY  
BRICKELL  
THE RESIDENCES



Sales: Fortune Development Sales & Related Realty

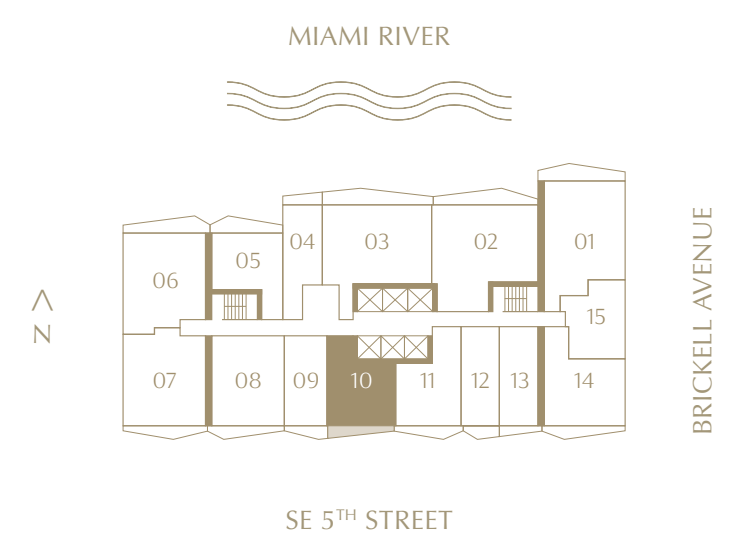
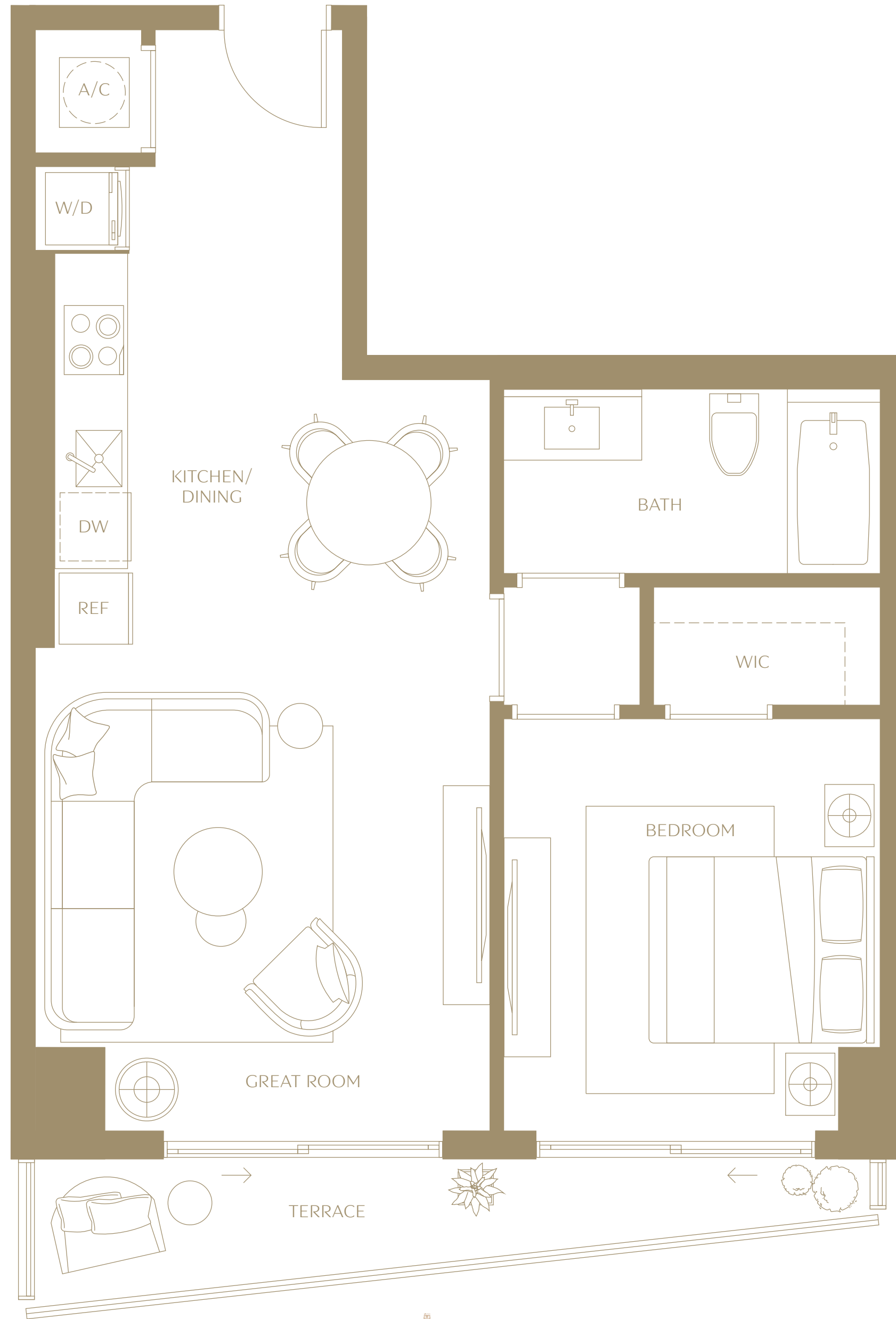
The dimensions stated for this floor plan are approximate because there are various recognized methods for calculating the square footage of a unit. The square footage stated here is calculated from the exterior boundaries of the exterior walls to the centerline of interior demising walls without deductions for cutouts, curves, or architectural features. This method typically results in quoted dimensions greater than the dimensions that would be determined by using other accepted methods. The definition of "Unit" and the calculation method to be relied upon is set forth by 444 BRICKELL TWO, LLC (the "Developer") in Developer's prospectus which method may result in a square footage calculation less than the result of the calculation method used here. VICEROY BRANDS, LLC owns the mark and name Viceroy®. The Developer is permitted to use the name and logo of The Related Group® and Viceroy® pursuant to license agreements which are valid unless terminated or expired; neither The Related Group nor Viceroy Brands, LLC are the Developer. Consult the Developer's prospectus to learn what is included with Unit purchase and to understand Unit dimensions. 2024 © 444 BRICKELL TWO, LLC with all rights reserved.

# Residence 10

1 BEDROOM | 1 BATHROOM | LEVELS 15 TO 42

<b>INTERIOR</b>	686 SQ. FT.	63.73 SQ. MTS.
<b>EXTERIOR</b>	78 SQ. FT.	7 SQ. MTS.

VICEROY  
BRICKELL  
THE RESIDENCES



Sales: Fortune Development Sales & Related Realty

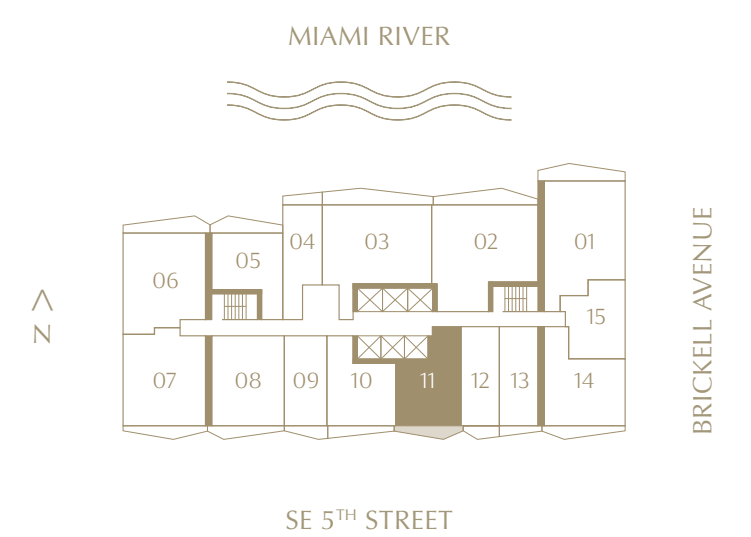
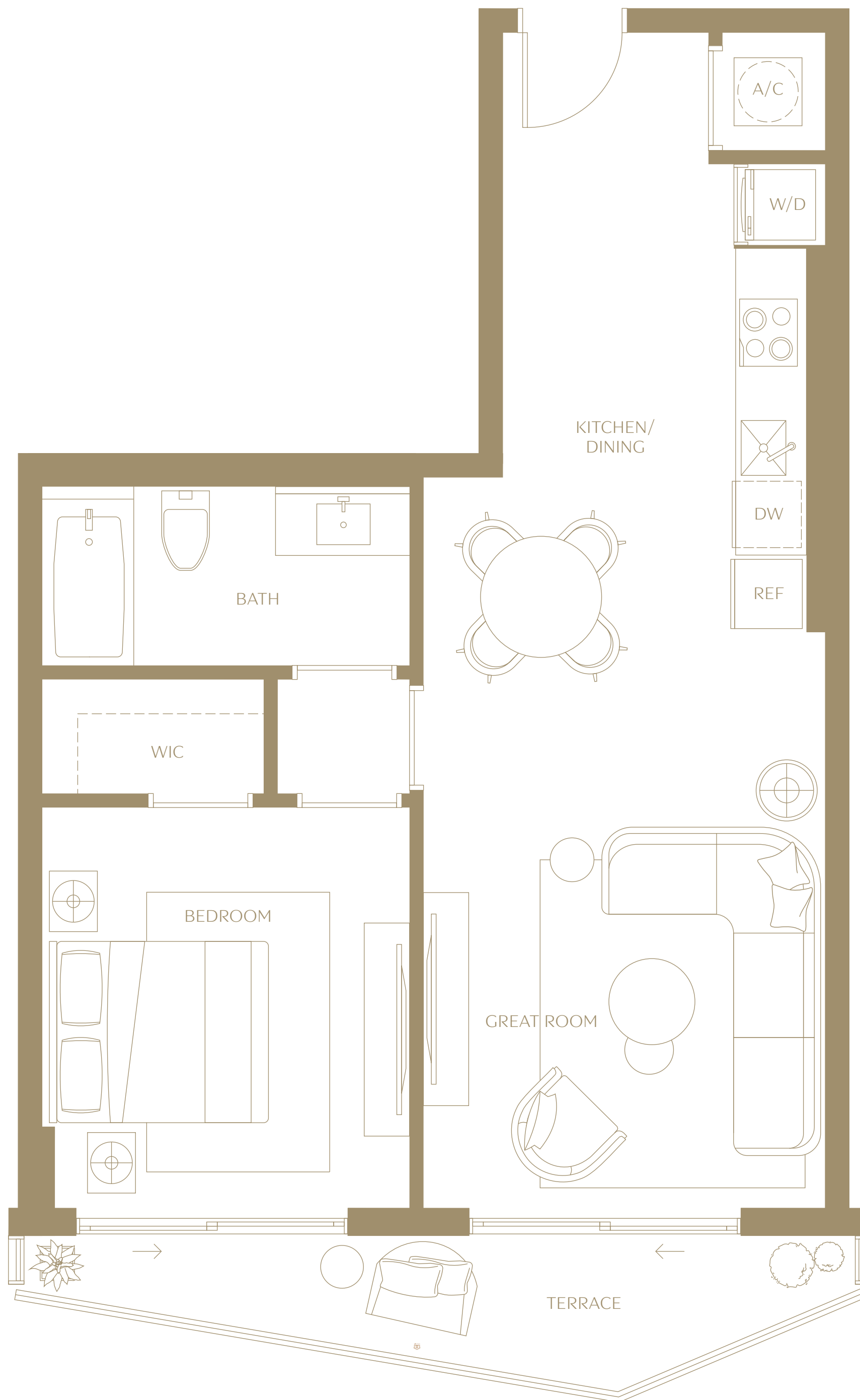
The dimensions stated for this floor plan are approximate because there are various recognized methods for calculating the square footage of a unit. The square footage stated here is calculated from the exterior boundaries of the exterior walls to the centerline of interior demising walls without deductions for cutouts, curves, or architectural features. This method typically results in quoted dimensions greater than the dimensions that would be determined by using other accepted methods. The definition of "Unit" and the calculation method to be relied upon is set forth by 444 BRICKELL TWO, LLC (the "Developer") in Developer's prospectus which method may result in a square footage calculation less than the result of the calculation method used here. VICEROY BRANDS, LLC owns the mark and name Viceroy®. The Developer is permitted to use the name and logo of The Related Group® and Viceroy® pursuant to license agreements which are valid unless terminated or expired; neither The Related Group nor Viceroy Brands, LLC are the Developer. Consult the Developer's prospectus to learn what is included with Unit purchase and to understand Unit dimensions. 2024 © 444 BRICKELL TWO, LLC with all rights reserved.

# Residence 11

1 BEDROOM | 1 BATHROOM | LEVELS 15 TO 42

<b>INTERIOR</b>	699 SQ. FT.	64.94 SQ. MTS.
<b>EXTERIOR</b>	85 SQ. FT.	8 SQ. MTS.

**VICEROY  
BRICKELL**  
THE RESIDENCES



Sales: Fortune Development Sales & Related Realty

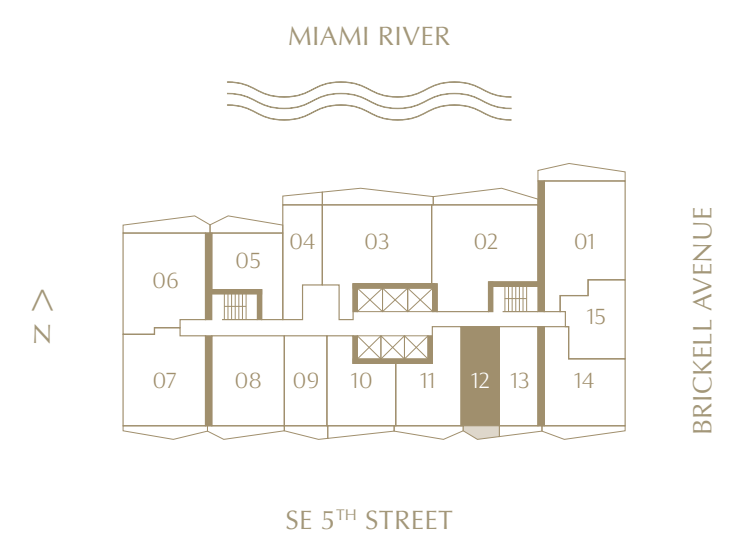
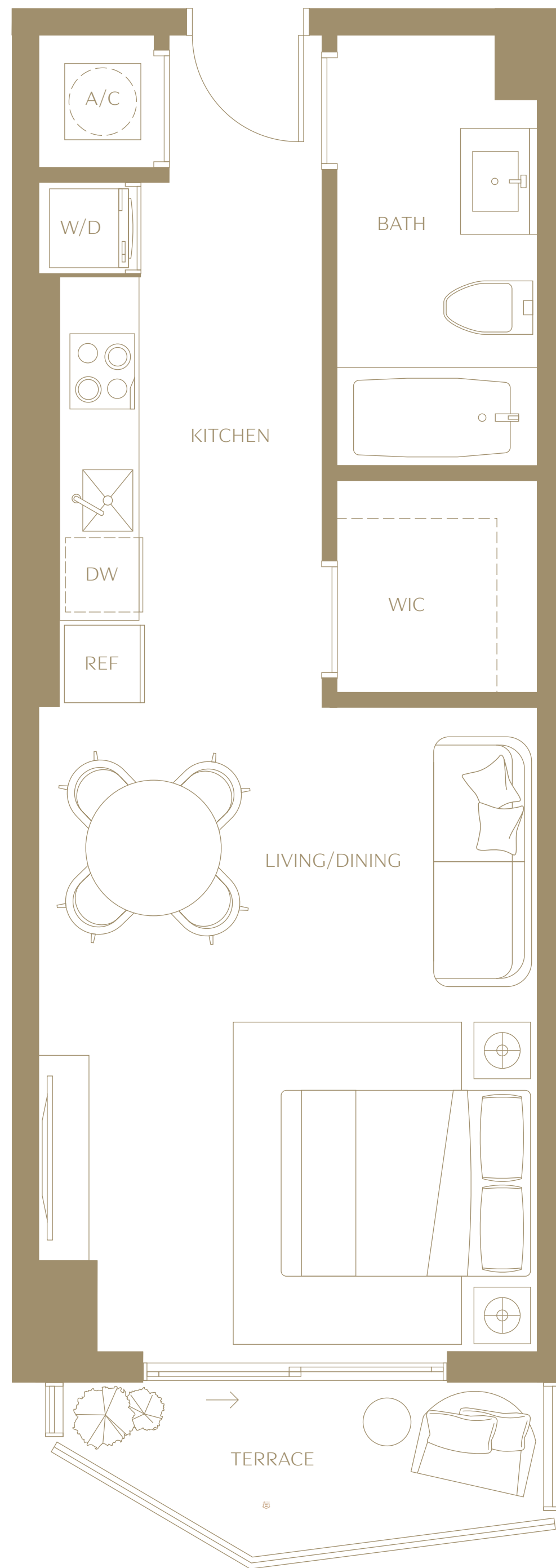
ⓘ The dimensions stated for this floor plan are approximate because there are various recognized methods for calculating the square footage of a unit. The square footage stated here is calculated from the exterior boundaries of the exterior walls to the centerline of interior demising walls without deductions for cutouts, curves, or architectural features. This method typically results in quoted dimensions greater than the dimensions that would be determined by using other accepted methods. The definition of "Unit" and the calculation method to be relied upon is set forth by 444 BRICKELL TWO, LLC (the "Developer") in Developer's prospectus which method may result in a square footage calculation less than the result of the calculation method used here. VICEROY BRANDS, LLC owns the mark and name Viceroy®. The Developer is permitted to use the name and logo of The Related Group® and Viceroy® pursuant to license agreements which are valid unless terminated or expired; neither The Related Group nor Viceroy Brands, LLC are the Developer. Consult the Developer's prospectus to learn what is included with Unit purchase and to understand Unit dimensions. 2024 © 444 BRICKELL TWO, LLC with all rights reserved.

# Residence 12

STUDIO | 1 BATHROOM | LEVELS 15 TO 42

<b>INTERIOR</b>	489 SQ. FT.	45.43 SQ. MTS.
<b>EXTERIOR</b>	53 SQ. FT.	5 SQ. MTS.

**VICEROY  
BRICKELL**  
THE RESIDENCES



Sales: Fortune Development Sales & Related Realty

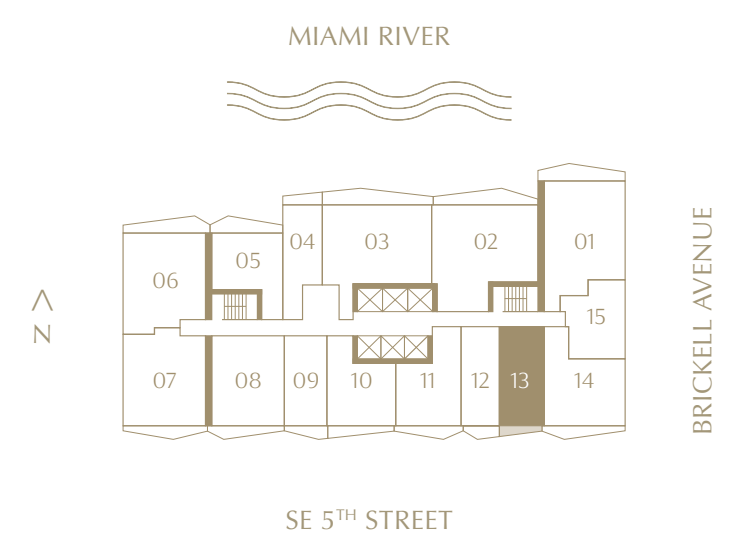
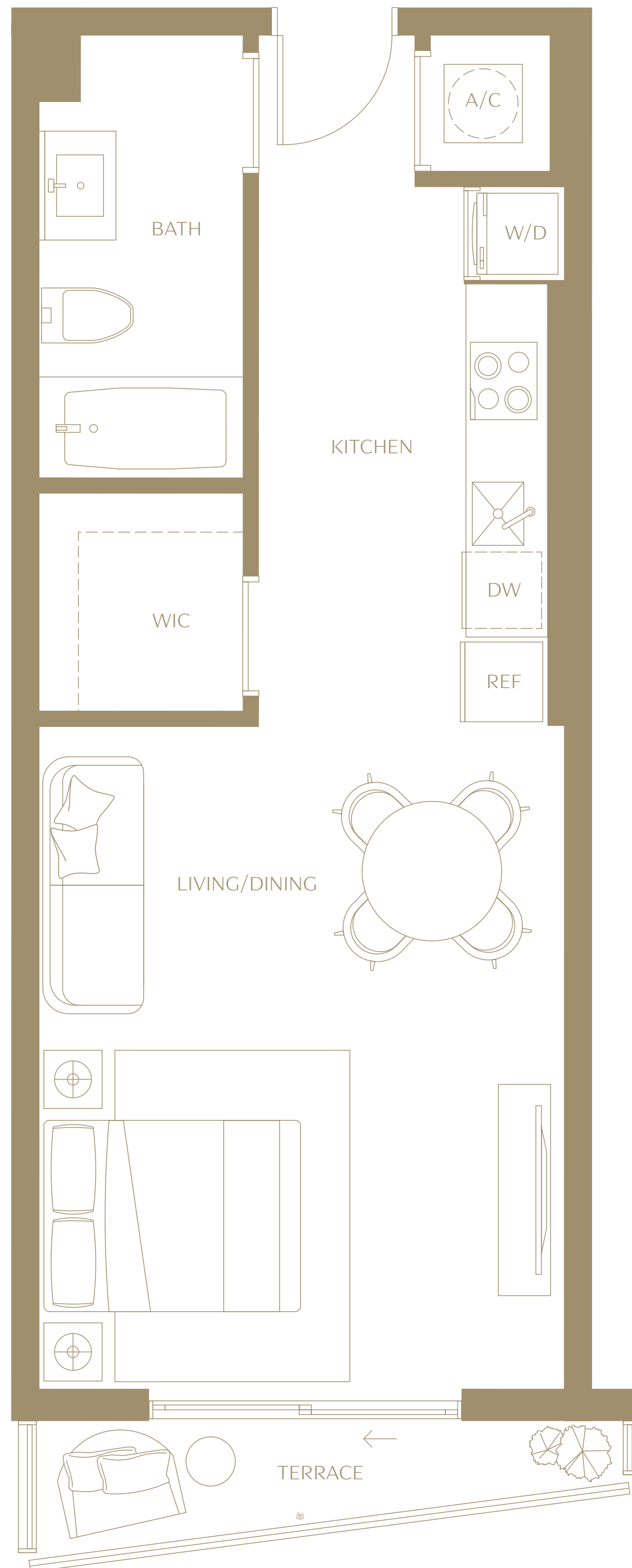
ⓘ The dimensions stated for this floor plan are approximate because there are various recognized methods for calculating the square footage of a unit. The square footage stated here is calculated from the exterior boundaries of the exterior walls to the centerline of interior demising walls without deductions for cutouts, curves, or architectural features. This method typically results in quoted dimensions greater than the dimensions that would be determined by using other accepted methods. The definition of "Unit" and the calculation method to be relied upon is set forth by 444 BRICKELL TWO, LLC (the "Developer") in Developer's prospectus which method may result in a square footage calculation less than the result of the calculation method used here. VICEROY BRANDS, LLC owns the mark and name Viceroy®. The Developer is permitted to use the name and logo of The Related Group® and Viceroy® pursuant to license agreements which are valid unless terminated or expired; neither The Related Group nor Viceroy Brands, LLC are the Developer. Consult the Developer's prospectus to learn what is included with Unit purchase and to understand Unit dimensions. 2024 © 444 BRICKELL TWO, LLC with all rights reserved.

# Residence 13

STUDIO | 1 BATHROOM | LEVELS 15 TO 42

<b>INTERIOR</b>	539 SQ. FT.	50.07 SQ. MTS.
<b>EXTERIOR</b>	45 SQ. FT.	4 SQ. MTS.

VICEROY  
BRICKELL  
THE RESIDENCES



Sales: Fortune Development Sales & Related Realty

The dimensions stated for this floor plan are approximate because there are various recognized methods for calculating the square footage of a unit. The square footage stated here is calculated from the exterior boundaries of the exterior walls to the centerline of interior demising walls without deductions for cutouts, curves, or architectural features. This method typically results in quoted dimensions greater than the dimensions that would be determined by using other accepted methods. The definition of "Unit" and the calculation method to be relied upon is set forth by 444 BRICKELL TWO, LLC (the "Developer") in Developer's prospectus which method may result in a square footage calculation less than the result of the calculation method used here. VICEROY BRANDS, LLC owns the mark and name Viceroy®. The Developer is permitted to use the name and logo of The Related Group® and Viceroy® pursuant to license agreements which are valid unless terminated or expired; neither The Related Group nor Viceroy Brands, LLC are the Developer. Consult the Developer's prospectus to learn what is included with Unit purchase and to understand Unit dimensions. 2024 © 444 BRICKELL TWO, LLC with all rights reserved.

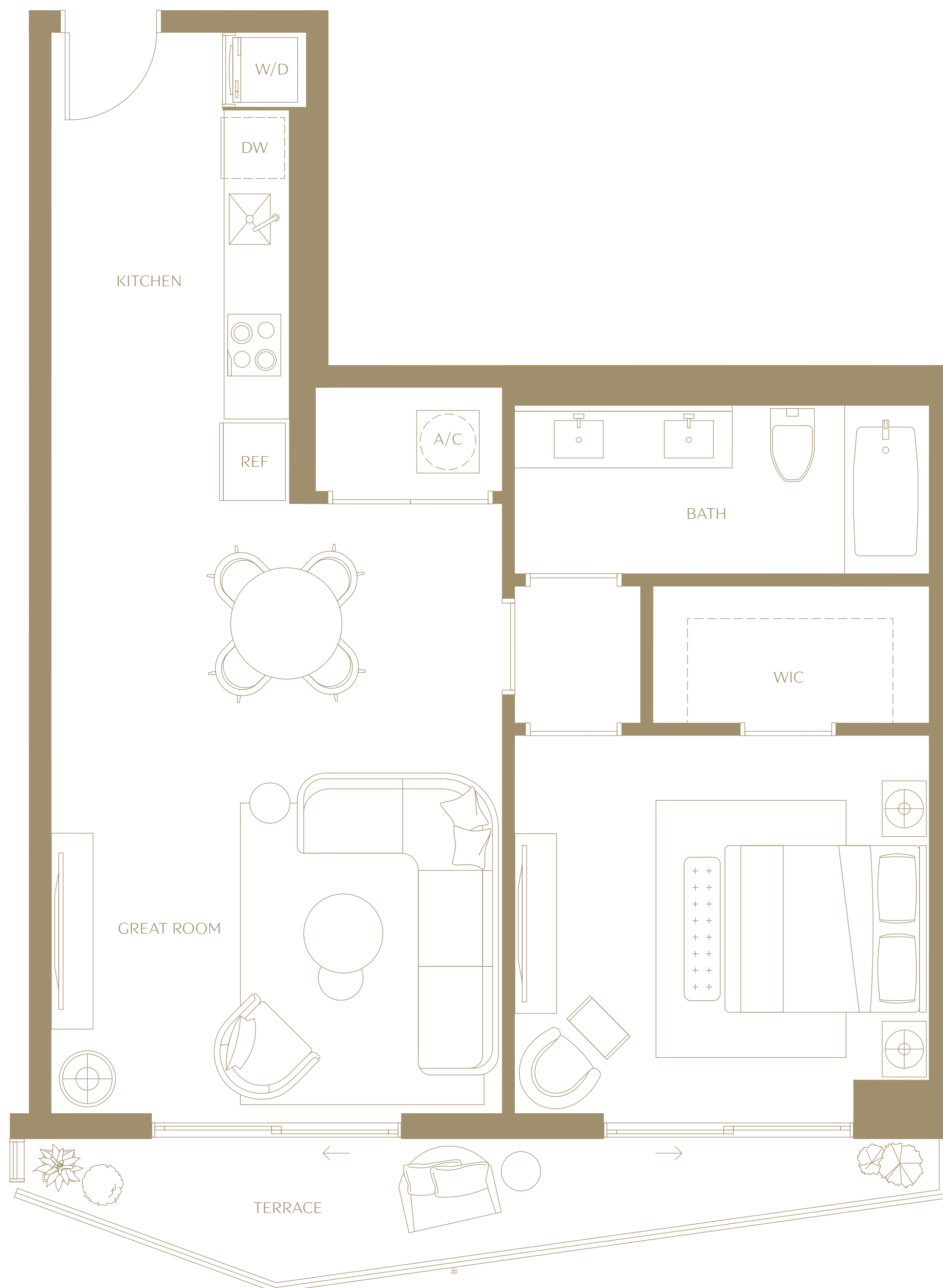
# Residence 14

1 BEDROOM | 1 BATHROOM | LEVELS 15 TO 42

**INTERIOR** 833 SQ. FT. 77.39 SQ. MTS.

**EXTERIOR** 102 SQ. FT. 9 SQ. MTS.

**VICEROY  
BRICKELL**  
THE RESIDENCES



Sales: Fortune Development Sales & Related Realty

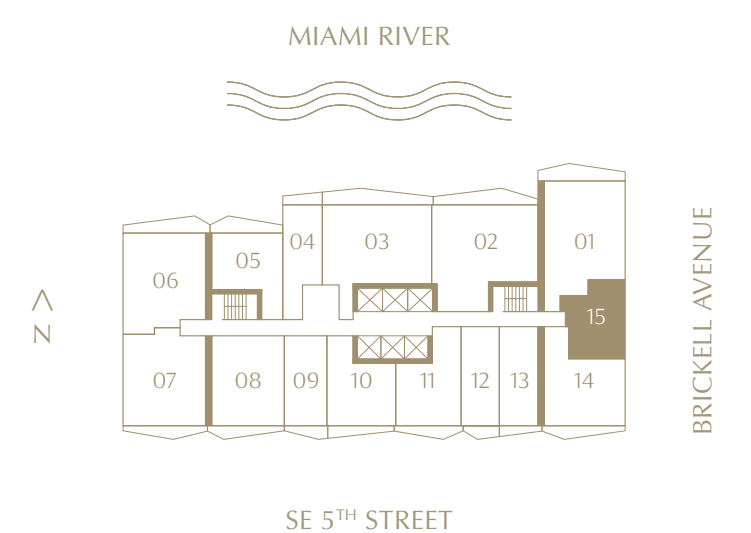
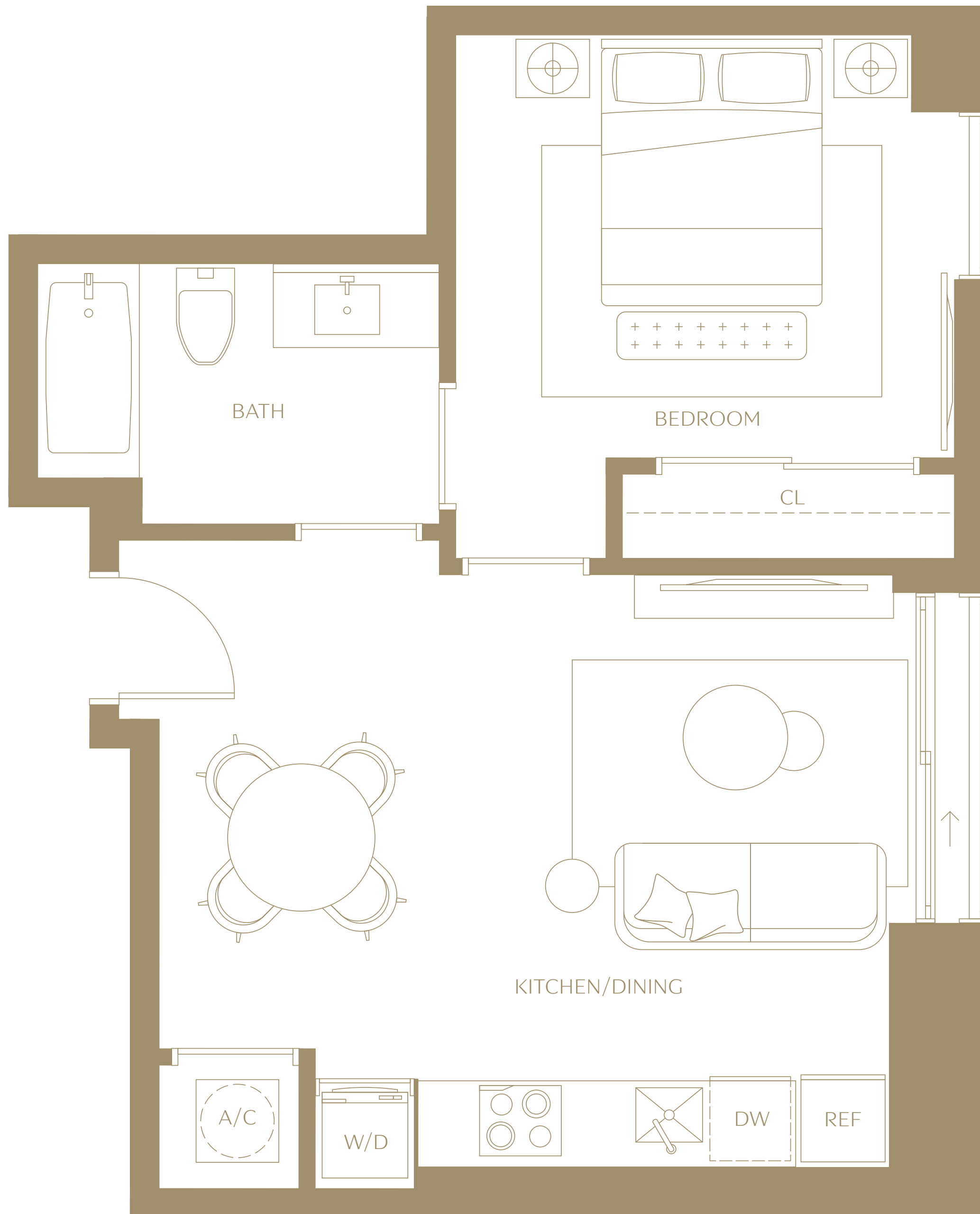
ⓘ The dimensions stated for this floor plan are approximate because there are various recognized methods for calculating the square footage of a unit. The square footage stated here is calculated from the exterior boundaries of the exterior walls to the centerline of interior demising walls without deductions for cutouts, curves, or architectural features. This method typically results in quoted dimensions greater than the dimensions that would be determined by using other accepted methods. The definition of "Unit" and the calculation method to be relied upon is set forth by 444 BRICKELL TWO, LLC (the "Developer") in Developer's prospectus which method may result in a square footage calculation less than the result of the calculation method used here. VICEROY BRANDS, LLC owns the mark and name Viceroy®. The Developer is permitted to use the name and logo of The Related Group® and Viceroy® pursuant to license agreements which are valid unless terminated or expired; neither The Related Group nor Viceroy Brands, LLC are the Developer. Consult the Developer's prospectus to learn what is included with Unit purchase and to understand Unit dimensions. 2024 © 444 BRICKELL TWO, LLC with all rights reserved.

# Residence 15

1 BEDROOM | 1 BATHROOM | LEVELS 15 TO 42

INTERIOR 511 SQ. FT. 51.19 SQ. MTS.

VICEROY  
BRICKELL  
THE RESIDENCES



Sales: Fortune Development Sales & Related Realty

The dimensions stated for this floor plan are approximate because there are various recognized methods for calculating the square footage of a unit. The square footage stated here is calculated from the exterior boundaries of the exterior walls to the centerline of interior demising walls without deductions for cutouts, curves, or architectural features. This method typically results in quoted dimensions greater than the dimensions that would be determined by using other accepted methods. The definition of "Unit" and the calculation method to be relied upon is set forth by 444 BRICKELL TWO, LLC (the "Developer") in Developer's prospectus which method may result in a square footage calculation less than the result of the calculation method used here. VICEROY BRANDS, LLC owns the mark and name Viceroy®. The Developer is permitted to use the name and logo of The Related Group® and Viceroy® pursuant to license agreements which are valid unless terminated or expired; neither The Related Group nor Viceroy Brands, LLC are the Developer. Consult the Developer's prospectus to learn what is included with Unit purchase and to understand Unit dimensions. 2024 © 444 BRICKELL TWO, LLC with all rights reserved.

SALES GALLERY

444 Brickell Ave Suite P-6 Miami, FL 33131